

aquatecnic
Wetroom Experts

• shower outlets

caro
FLOW

caroflow shower outlets

Caroflow Shower Outlets are suitable for installation in sheet flooring and tiled floor finishes and provide an extremely aesthetic solution to the problem of drainage from high performance shower units in a wetroom environment. There are two main types of Caroflow Shower Outlet available, the Loline which is only 95mm deep and the Standard Shower Outlet which is deeper but can drain a higher quantity of water.

Loline Shower Outlet

Available with a horizontal take-off, the depth of the whole body unit is only 95mm, small enough to be installed within the space formed by low lift 100mm joists when supported on a suspended wooden floor. The reduced height makes it easier to use within the screed build-up on top of a concrete deck or block and beam floor and yet still gives a full 50mm water trap.

Materials

Caroflow Loline Shower Outlet bodies are manufactured in pre-treated, electrostatically applied powder coated, diecast LM6 aluminium silicon alloy. The clamp and cover plate are manufactured in either chrome plated corrosion resistant zinc or electrostatically applied die cast aluminium.

Dimensions and Connections

The Loline will connect to all proprietary 40mm compression or push fit systems. Dimensions are given in the drawing below.

Performance

Caroflow Loline Shower Outlets have been tested and achieve a constant flow rate in excess of 0.45 litres per second, when connected to a 40mm (1.5") pipe.

Example Specification

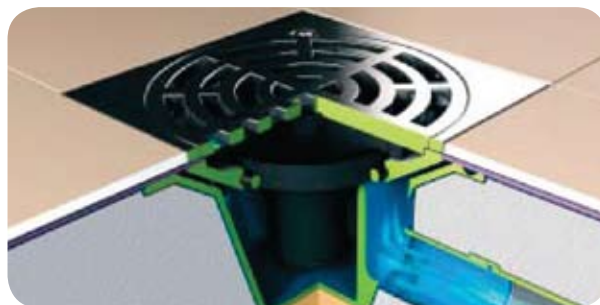
Caroflow Loline integrally trapped shower outlets, with chrome plate finish, for tiled floor installation (Code LL/T/C) all as supplied by Köster Aquatecnic Limited.



Installation Examples

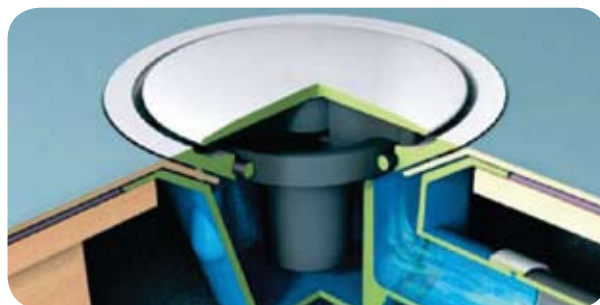
The tiled floor system shown below is also suitable for use on wooden decks created using minimum 20mm thick WBP, marine or birch plywood.

Tiled Flooring on Concrete Deck



If a tiled floor is to be used, then a separate tile set is available. This is then fixed directly over the outlet mouth and the grating is removable to allow full access to the trap unit.

Vinyl Sheet Flooring on Timber Deck



In a vinyl sheet flooring situation the sheeting is clamped under the clamping ring ensuring a completely water tight installation

● **We're Here to Help** | If you need any further advice please do not hesitate to contact us.

Standard Shower Outlet

Available with a horizontal or vertical take-off, the depth of the whole unit is 155mm (vertical spigot) or 160mm (horizontal spigot) small enough to be installed within the space formed by 150mm joists when supported on a suspended wooden floor. The unit will drain at a constant rate of 0.75 litres per second and provides a full 50mm water trap.

Materials

Caroflow Standard Shower Outlet bodies and clamp/trap sets are manufactured in pre-treated, electrostatically powder coated, diecast LM6 aluminium silicon alloy to BS1490:1970, with stainless steel fixings.

Dimensions and Connections

Both the vertical and horizontal versions will allow direct connection to 40mm (1.5 inch) solvent weld pipe to BS5255 or to a push-fit EN1329 using proprietary pipe manufacturers fittings. Dimensions are given opposite. On the horizontal outlet Köster Aquatecnic recommend that you allow an extra 5mm depth (total 160mm) to accommodate the mouth of the pipe socket.

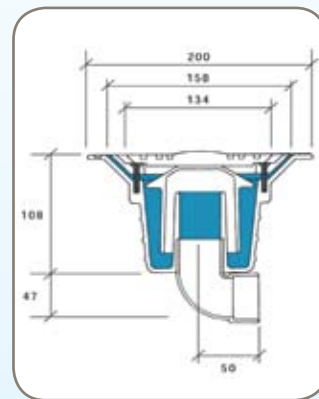
Performance

Caro Standard Shower Outlets have been tested and achieve a constant flow rate in excess of 0.75 litres per second, when connected to a 40mm (1.5") pipe.

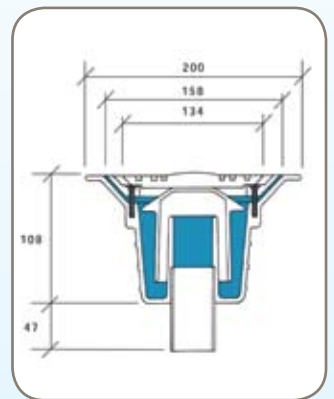
Example Specification

Caroflow horizontal spigot trapped shower outlet for tiled floor with chrome tile set. Product ref: SDHS/40/T/Chrome, all as supplied by Köster Aquatecnic Limited.

Horizontal Spigot



Vertical Spigot



Grating Options

For vinyl floors the Loline Outlet is supplied with either a chrome plated, stainless steel or white powder coated cover plate. For Tiled floor finishes there is a choice of high quality Caroflow Tilesets, including chrome plated, machined nickel bronze, stainless steel or white powder coated. The Standard Shower Outlets are supplied with either a white powder coated circular grating (vinyl) or a choice of Caroflow Tilesets (tiled). All powder coated gratings and tilesets are also available in virtually any RAL colour, subject to quantity and setup costs.

Caroflow Tileset



Chrome/Stainless Steel



Nickel Bronze

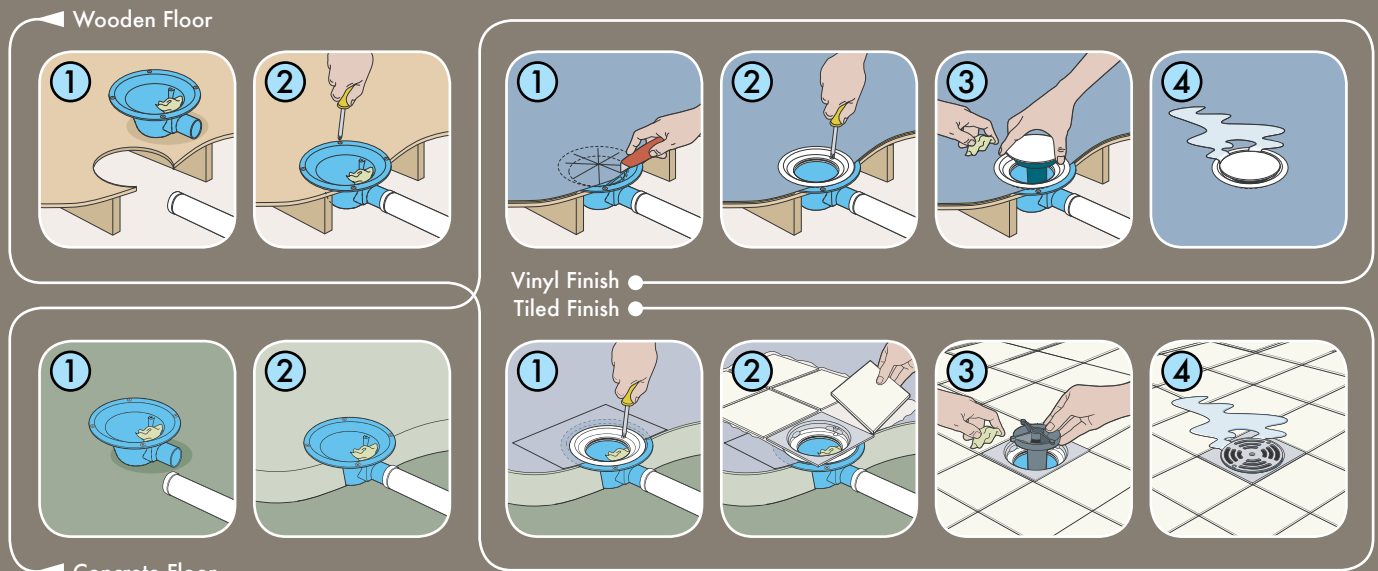


Powder Coated (white as standard)



Caroflow Shower Outlets | Installation Guidelines

The illustrations below explain the application process for a vinyl floor and a tiled floor. We have shown the vinyl floor on a wooden deck and the tiled floor on concrete, but these can equally be installed the other way around. If tiling over a timber floor the flooring should be min. 20mm WBP, marine or birch plywood. The Illustrations show a Caroflow Loline Outlet, but the application principles and cut-out size also apply to the Caroflow Standard Shower Outlet.



Wooden Floor: Cut-out size 170mm diameter. Cut-out must be rebated to allow shower outlet to sit flush. Floor must be sloped towards outlet.

Concrete Floor: Screed must be sloped towards outlet and must finish flush with outlet flange. Take care during application that screed does not flow into shower outlet.

Vinyl Finish: Star-cut vinyl flooring before fitting clamping ring.

Tiled Finish: Always use Aquaproof Tanking System before tiling. The square tileset frame is bedded into tile adhesive to match thickness of tiles.

KÖSTER
aquatecnic

Waterproofing for Professionals

The Mount Sydney, Craigs Road,
Dumfries DG1 4EU

T: 01387 270252

E: info@kosteruk.com

www.wetroomexperts.co.uk

Aquatecnic supply a full range of wetroom products including; wetroom tanking, shower enclosures, shower tray formers and underfloor heating. For further details please visit www.wetroomexperts.co.uk